



**滚子凸輪式無間隙**  
Roller Cam Type without Backlash

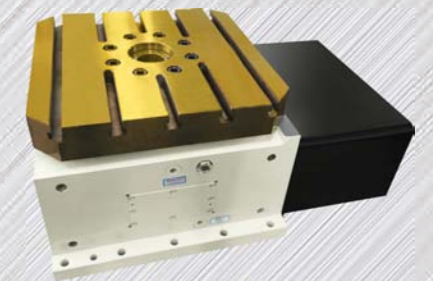
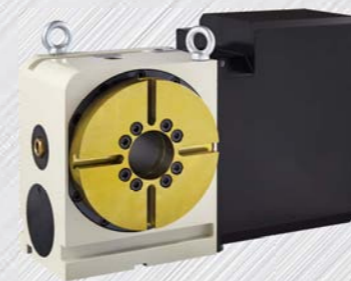
**工业母机核心功能部件制造商**  
Manufacturer of core functional components of industrial mother machine

**分度、精度、速度、高士达为您服务**  
Graduation, Precision, Speed, GSDCAM Serves for You



**CNC分度盘**  
CNC Indexing Table

• 低摩擦 Low Friction • 無間隙 No Gaps • 剛性强 High Rigidity



深圳市高士達精密機械有限公司  
SHENZHEN GOLDSTAR PRECISION MACHINERY CO.,LTD.

地址：深圳市龙华新区观澜镇君子布村君新路  
(142号) 胜顺产业园B栋  
电话：0755-29673755/29673855/29673955  
传真：0755-29673856  
邮箱：gsdcam@gsdcam.com  
网址：www.gsdcam.com

经 销 商

深圳市高士達精密機械有限公司  
SHENZHEN GOLDSTAR PRECISION MACHINERY CO.,LTD.



滚子凸轮结构 让传动更高效

# 目录 CONTENTS

企业文化	01
企业简介	03
品质保证	05
零间隙驱动技术	06
無維護和卓越的性價比	07
精度檢查項目	08
NC系列	09
AC系列	17
DC系列	22
分度盘选配	27
转台规格选择表	28
应用案例	29



# 企业文化 CORPORATE CULTURE

高士达以执着的专业精神  
秉持产品品质优良的经营理念  
与您共创美好未来！

企业精神：诚信、责任、敬业、感恩

企业价值观：以人为本、勇于创新、用心服务

企业宗旨：追求卓越品质，实现彼此双赢

经营理念：品质第一、竞争创优、客户至上



把握先锋趋势  
以实力缔造辉煌



诚信  
Sincerity

专业  
Professional

创新  
Innovation

服务  
Service



公司前台



办公室一角



管理层研究公司的发展规划

## 企业简介 Corporate Profile

深圳市高士达精密机械有限公司是一家集研发、生产、服务为一体的凸轮转台及精密机械凸轮的制造企业。

自公司成立之初我们就联合台湾资深凸轮设计制造专家，引进美国专业凸轮设计制造系统，同时引进台湾专业凸轮生产设备并成功升级。使我们在生产技术和设备上已达到世界的先进水平。

公司在不断满足3C产业、汽车产业、航空、军工、能源等等机床设备制造的同时并积极开拓国内外市场，致力于高新技术产品的开发制造，同时与国内外同行和企业开展各种形式的技术交流与合作。大力推广先进的加工工艺和技术，并且已经取得令人瞩目的成果。

我们本着“诚信、专业、创新、服务”的理念，遵从互惠互利，诚实守信的原则，以及服务机械工业发展为使命。在自我完善中跟随客户共同进取，努力为全社会机械工业发展作出积极的贡献。

Shenzhen Goldstar Precision Machinery Co., Ltd. is a manufacturer of cam turntables and precision mechanical cams integrating R&D, production and service.

Since the establishment of the company, we have cooperated with Taiwan's senior cam design and manufacturing experts, introduced the American professional cam design and manufacturing system, and introduced Taiwan's professional cam production equipment and successfully upgraded. So that we have reached the world's advanced level in production technology and equipment.

While continuously satisfying the manufacture of machine tools and equipment in the 3C industry, automobile industry, aviation, military industry, energy, etc., the company actively explores domestic and foreign markets, is committed to the development and manufacture of high-tech products, and conducts various forms of cooperation with domestic and foreign counterparts and enterprises. Technical exchange and cooperation. Vigorously promote advanced processing technology and technology, and has achieved remarkable results.

We adhere to the concept of "integrity, professionalism, innovation and service", follow the principles of mutual benefit, honesty and trustworthiness, and serve the development of the machinery industry as our mission. In the process of self-improvement, follow the customers to make progress together, and strive to make positive contributions to the development of the machinery industry in the whole society.

## 设计研发能力 Design R&D capability

我们的科研团队为客户量身定做、具有高度差异化的VIP顾问服务，强调一对一的专业化系统解决方案；

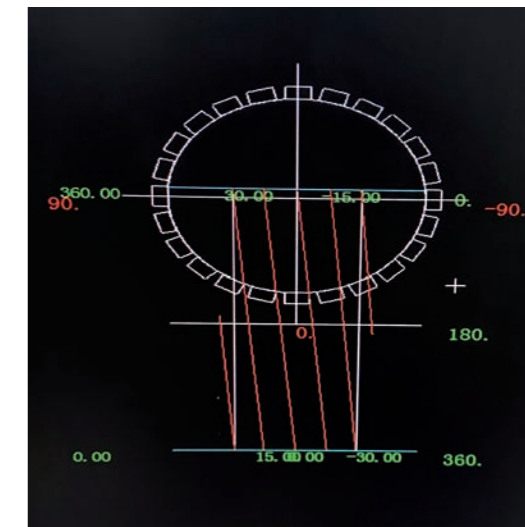
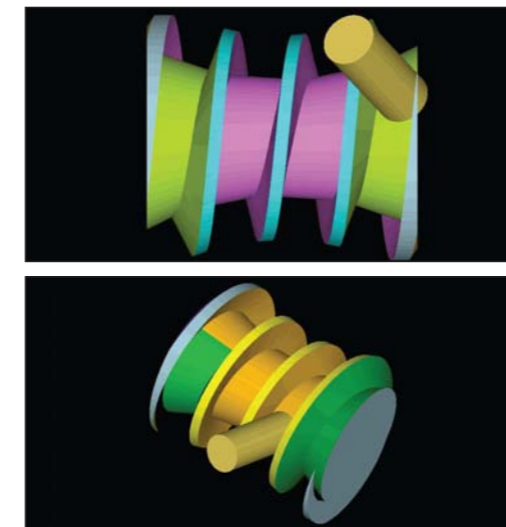
我们的管理团队时刻站在客户角度上考虑问题，我们真正尊重、关心客户；

我们的制造队伍主动挖掘和真正理解客户的需求，不断超越客户的期望。

Our scientific research team provides highly differentiated VIP consulting services tailored for customers, emphasizing one-to-one professional system solutions;

Our management team always considers problems from the perspective of customers, and we truly respect and care about customers;

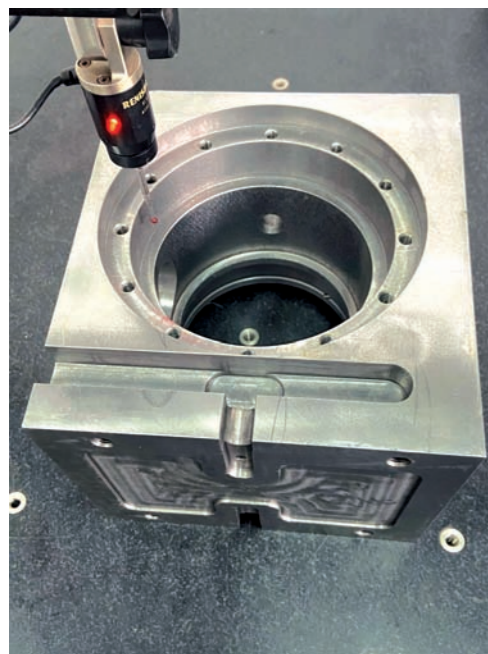
Our manufacturing team actively explores and truly understands the needs of customers, and constantly exceeds customer expectations.



## 品质保证 Product assurance

高士达拥有了完善的产品性能测试平台，做到不合格的产品一律不准出厂，赢得了客户的高度信赖。

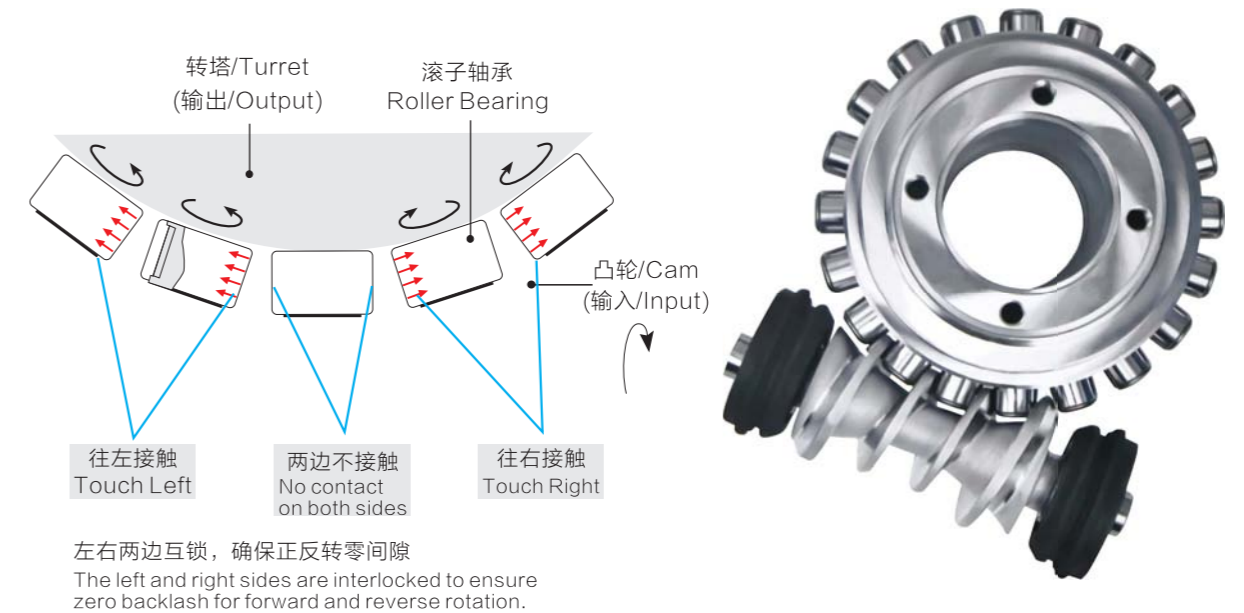
质量方针：全员参与、持续改善、用心服务、强化品牌。



## 零间隙驱动技术 Zero-backlash Drive Technology

### 特点 Features

- 零背隙
- 滚动传递无磨损
- 精度效率高
- 有预压刚性高
- Zero Backlash
- Rolling Transfer without Loss
- High Precision and High Efficiency
- High Rigidity with Preload



### 传动技术原理 Principles of Transmission Technology

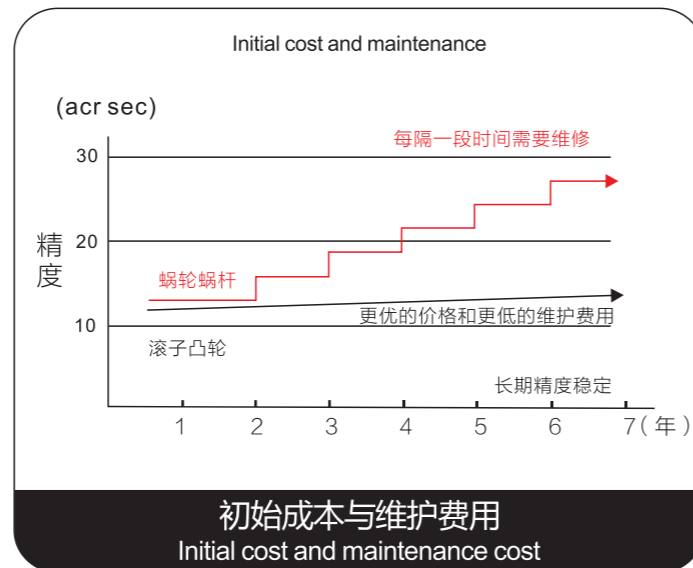
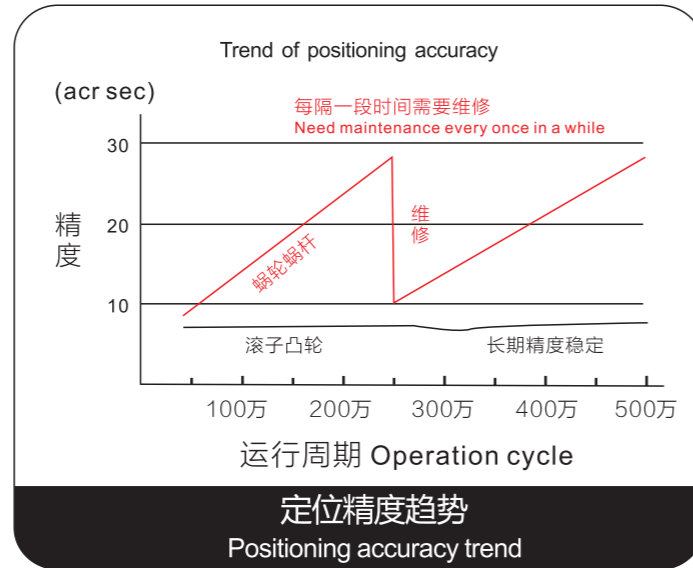
Roller Driver传动应用的是弧面分度原理，是目前最精确的运动控制方式。工作件由一个输入轴（弧面分度辊轮）及一个滚柱（输出轴）组成，输入轴上的辊轮槽表面与滚柱上的从动滚子元件外环表面呈线接触啮合，从而驱动转轮（即工作台）转动。从动滚子元件在旋转过程中利用内部滚柱轴承来传递扭矩。这样的工作原理保证了零间隙，优异的工作精度和工作效率并有效地避免了内部零件损耗，提供持久的高精度工作状态。

The Roller Driver transmission uses the arc surface indexing principle, which is currently the most accurate motion control method. The work piece is composed of an input shaft (curved index roller) and a roller (output shaft). The roller groove surface on the input shaft meshes with the outer ring surface of the driven roller element on the roller in line contact, so that to drive the wheel (that is, the worktable) to rotate. The driven roller element utilizes internal roller bearings to transmit torque during rotation. This working principle guarantees zero backlash, excellent working accuracy and working efficiency, and effectively avoids the loss of internal parts, and the provides a lasting high-precision working state.

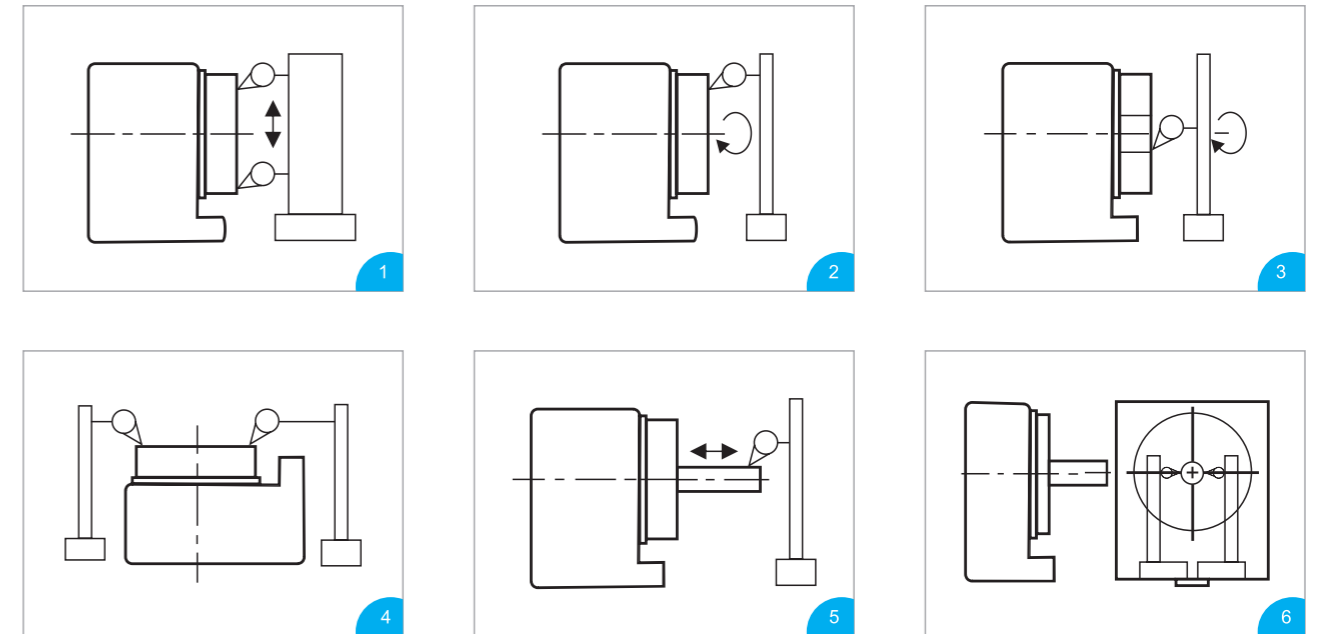
# 無維護和卓越的性價比 No maintenance and high cost performance

無需調整維護和高性價比 None-maintenance and high cost-effective

- 蜗輪蜗杆 Worm gear**  
 精度隨著時間下降，需要定期維護才能達到或接近初始精度。  
 Accuracy decreases over time and requires regular maintenance to reach or approach initial accuracy.
- 無背隙滾子 Backlashless roller**  
 在500萬次運行週期內精度一致，無需維護。  
 The accuracy is consistent within 5 million operation cycles and no maintenance is required.
- 蜗輪蜗杆 Worm gear**  
 每年需要一到二次維護，以調整精度的反彈。  
 It needs maintenance once or twice a year, which can make sure that the rebound of the whole precision.
- 無背隙滾子 Backlashless roller**  
 長期使用無需任何維護。  
 Long-term use does not require any maintenance.



# 精度檢查項目 Accuracy check items



NO.	项目 Items	170-500 单位: mm
1	转盘与本体底部之垂直度 Verticality between the turntable and the bottom of the main body	0.02
2	转盘旋转振幅 Turntable rotation amplitude	0.015
3	转盘中心孔旋转偏摆 Rotating deflection of center hole of turntable	0.01
4	转盘与本体之平行度 Parallelism between turntable and body	0.02
5	转盘中心与本体底部之平行度 Parallelism between the center of the turntable and the bottom of the body	0.02
6	转盘中心与基准块之平行度 Parallelism between the center of the turntable and the reference block	0.02



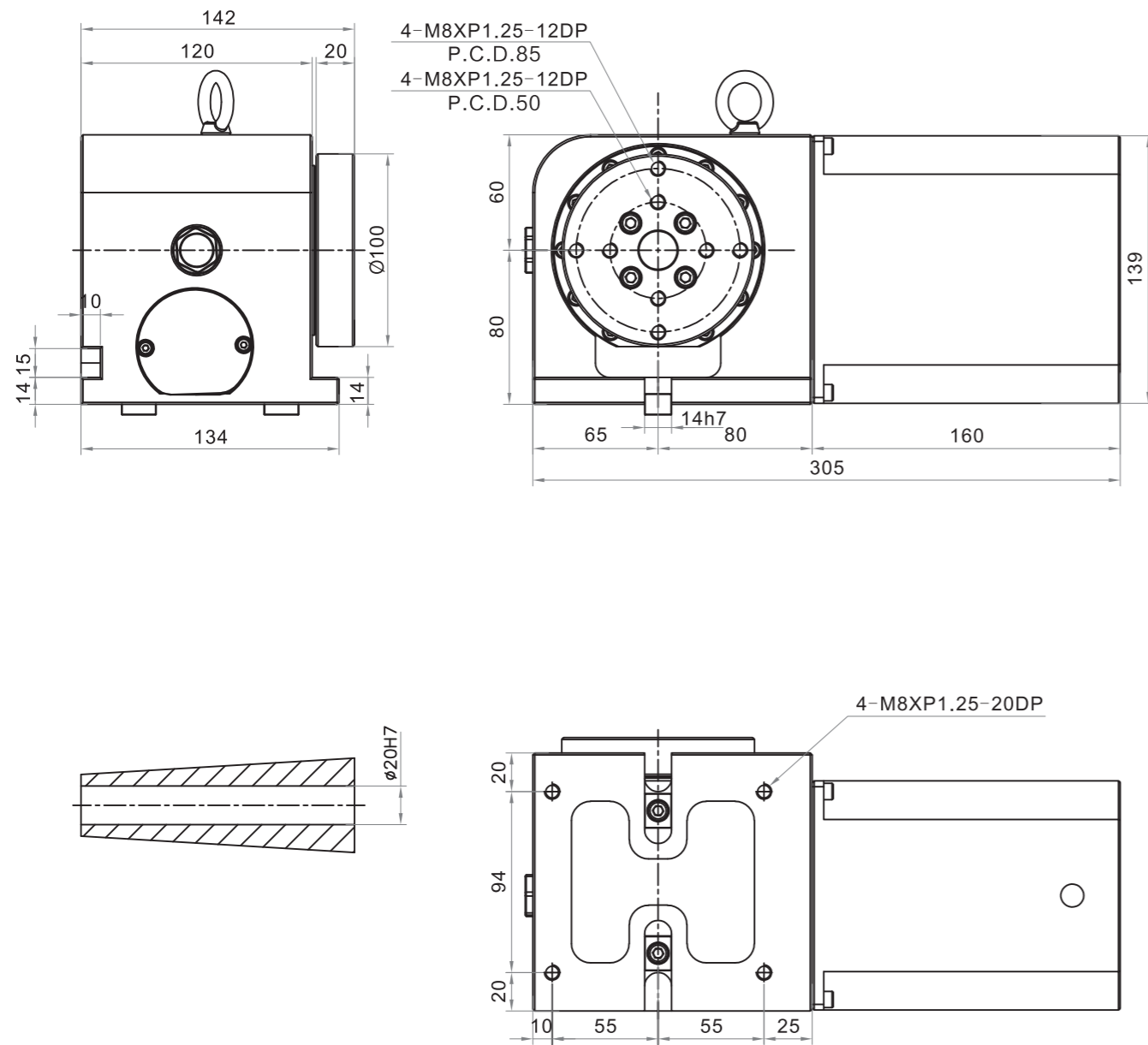
## NC系列

(GSD-NC80, GSD-NC170, GSD-NC200, GSD-NC250, GSD-NC320)

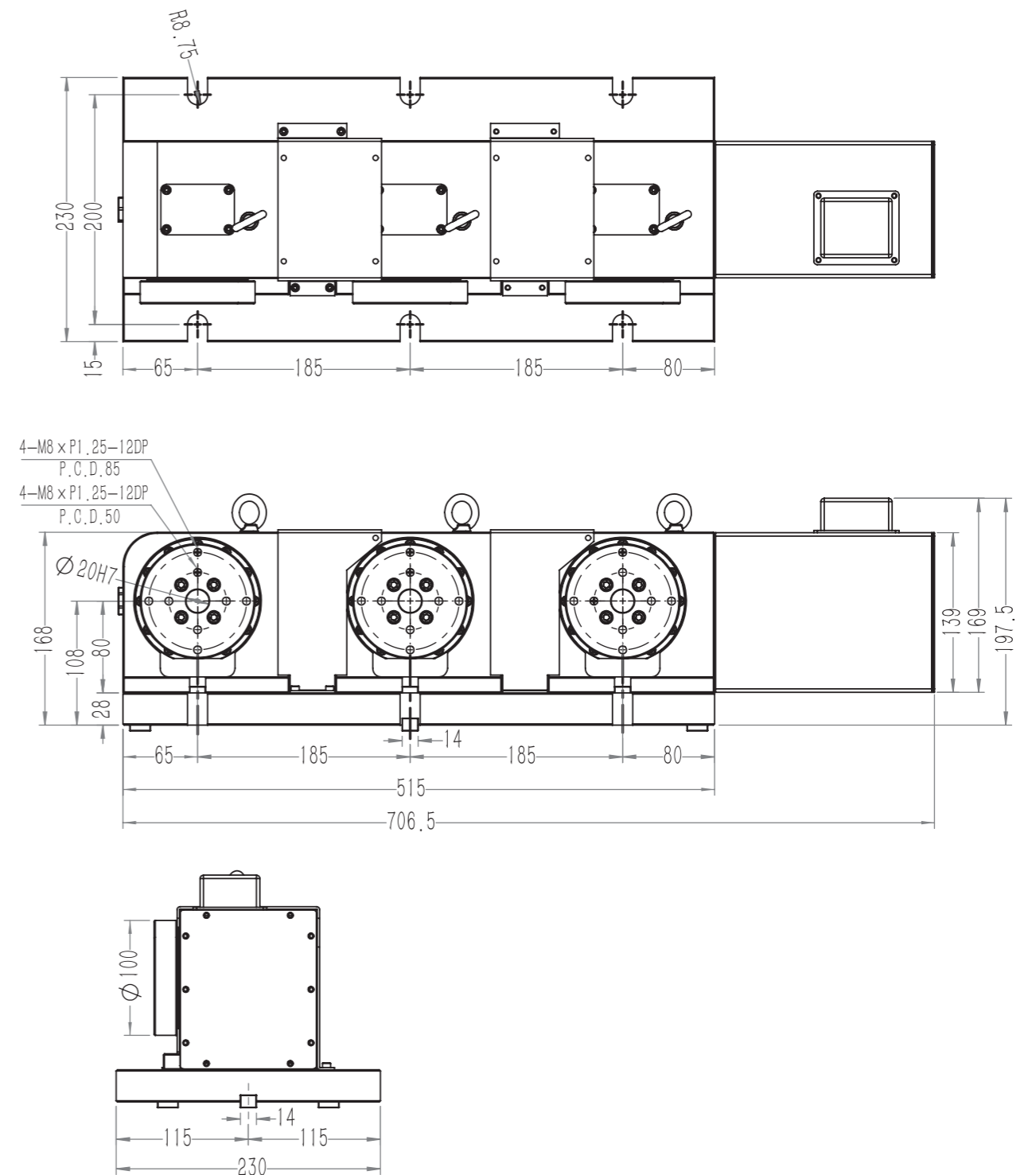
### 技术参数

项目 \ 规格型号	单位	GSD-NC80	GSD-NC170	GSD-NC200	GSD-NC250	GSD-NC320	
工作盘直径	mm	100	170	200	250	320	
中心高	mm	80	135	160	160	210	
基准孔	mm	Φ20H7	Φ40H7	Φ65H7	Φ65H7	Φ90H7	
T型槽	mm	N/A	12H7	12H7	12H7	14H7	
基准定位键	mm	14h7	14h7	18h7	18h7	18h7	
伺服马达	FANUC	βiS4	βiS8	βiS8	βiS8	βiS22	
	MITSUBISHI	HG-105S	HG-104S	HG-104S	HG-104S	HG-204S	
总减速比		1/24	1/48	1/48	1/48	1/60	
最高转速	r.p.m	100	60	60	60	50	
分度精度	arc.ccc	±20	±20	±20	±20	±15	
往复精度	arc.sec	8	8	8	8	8	
制动方式	气压/油压	气压	气压/油压	气压/油压	气压/油压	油压	
输入压力	kg-cm <sup>2</sup>	6	6/20	6/20	6/20	30	
输出制锁扭力	N.m	110	220/648	220/648	220/648	2158	
承载重量	立式安装	Kg	20	80	100	155	250
	卧式安装	Kg	55	160	200	280	420
容许切削力	F	N	N/A	12740	15789	20500	46550
	FxL	N.m	N/A	168	255	255	1625
	FxL	N.m	N/A	598	1348	1348	4735
最大惯性矩 *2	Kg.m <sup>2</sup>	0.2	0.6	1.2	2	5.2	
产品重量	Kg						

# GSD-NC80

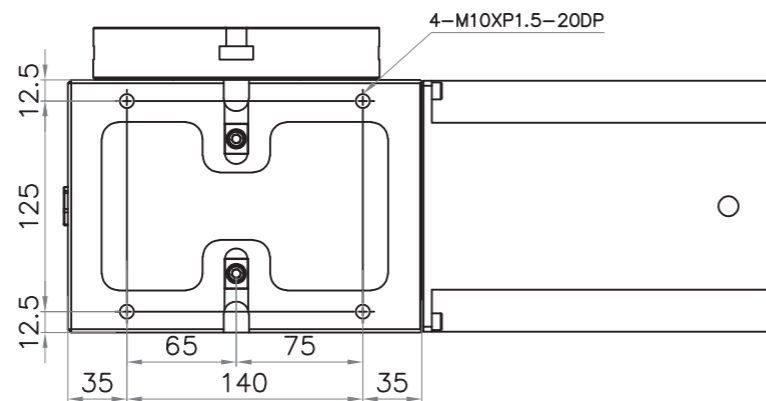
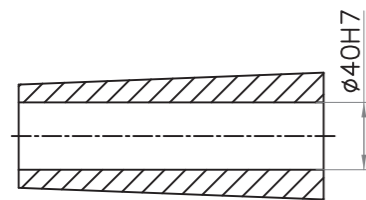
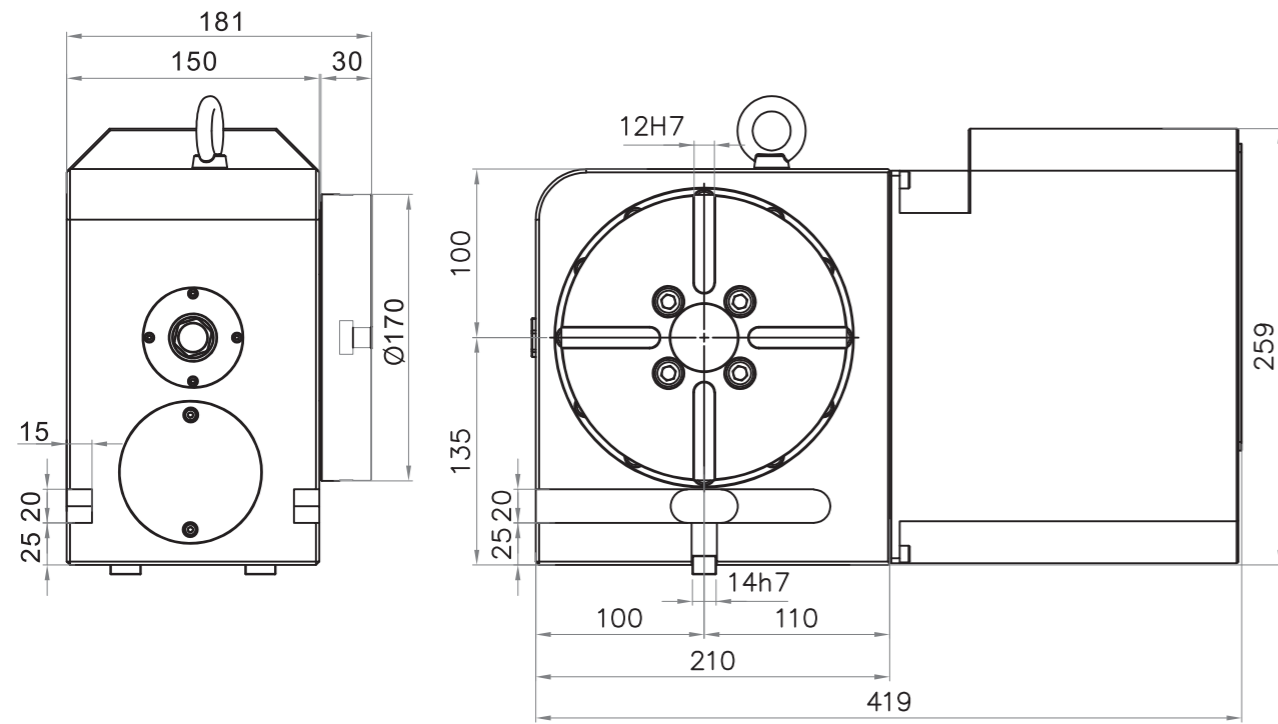


# GSD-NC80T3

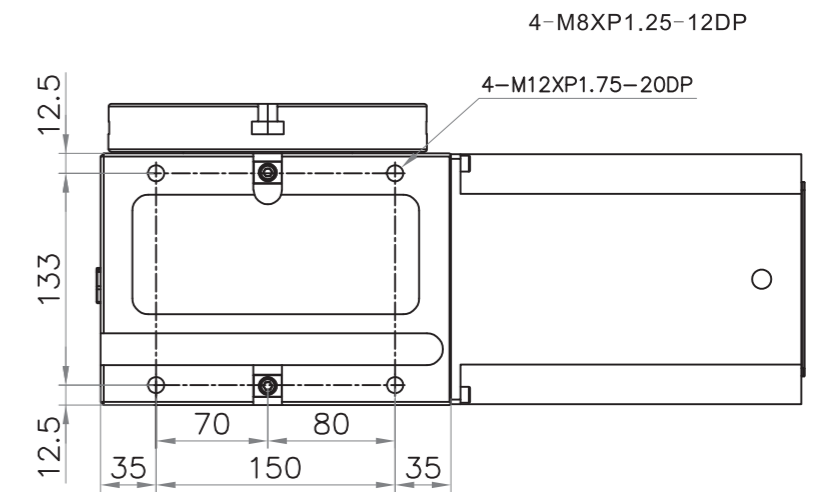
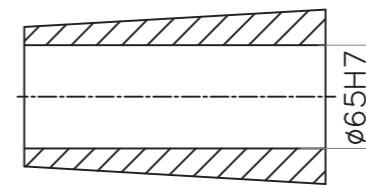
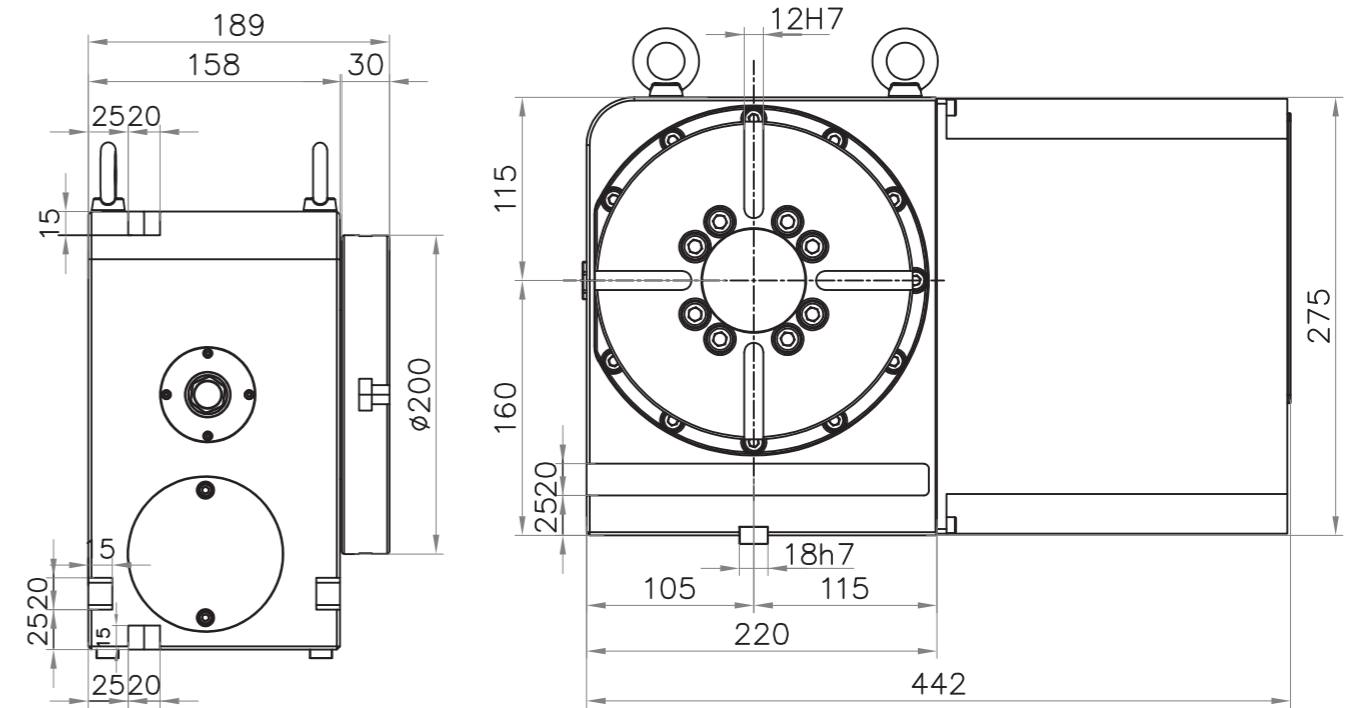




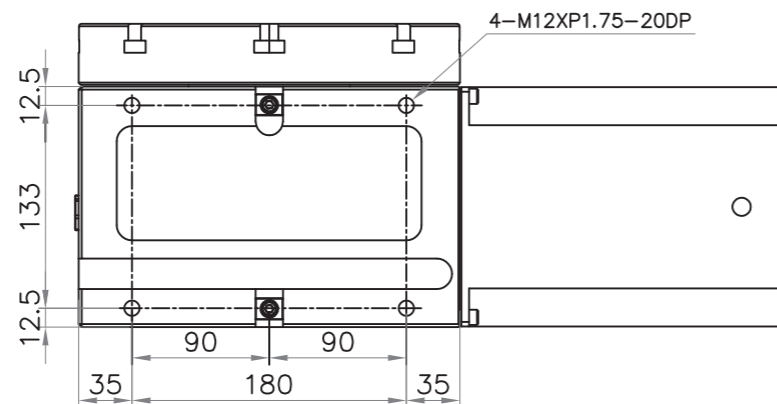
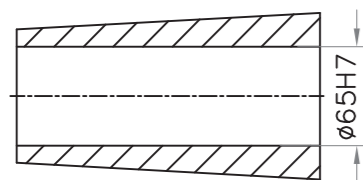
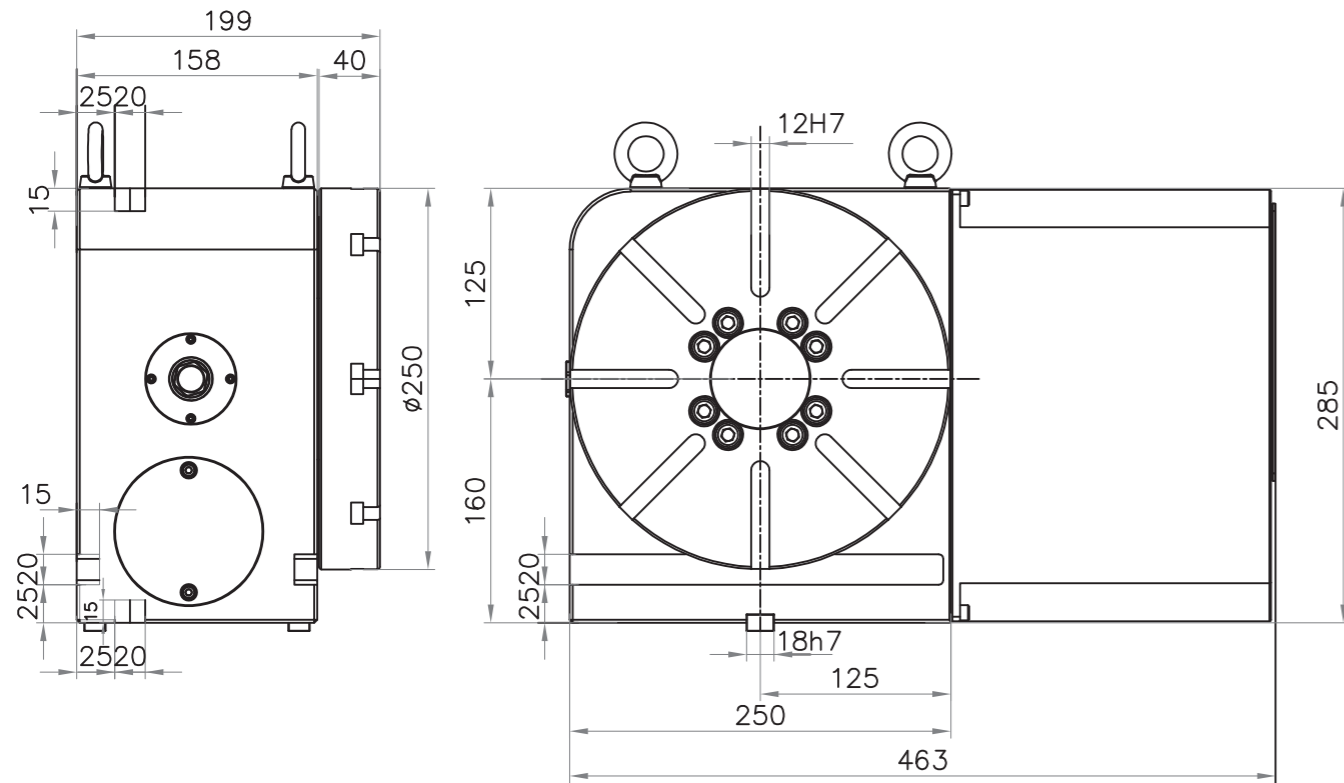
# GSD-NC170



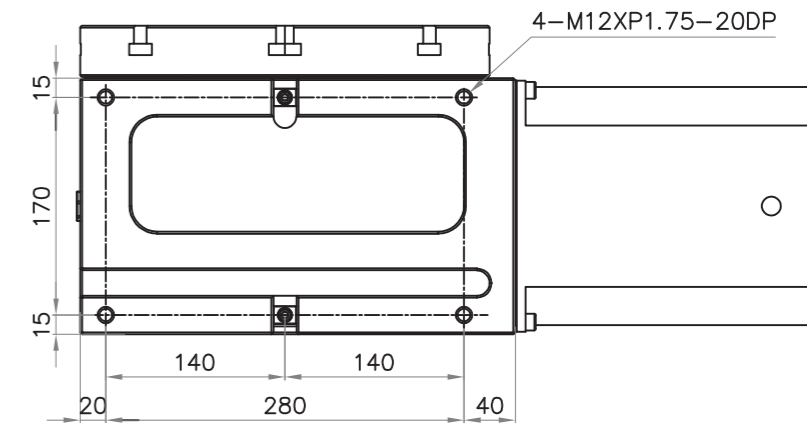
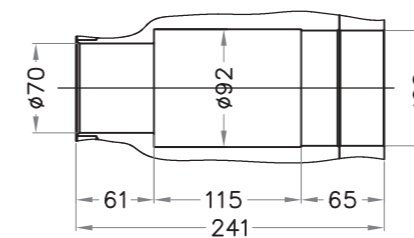
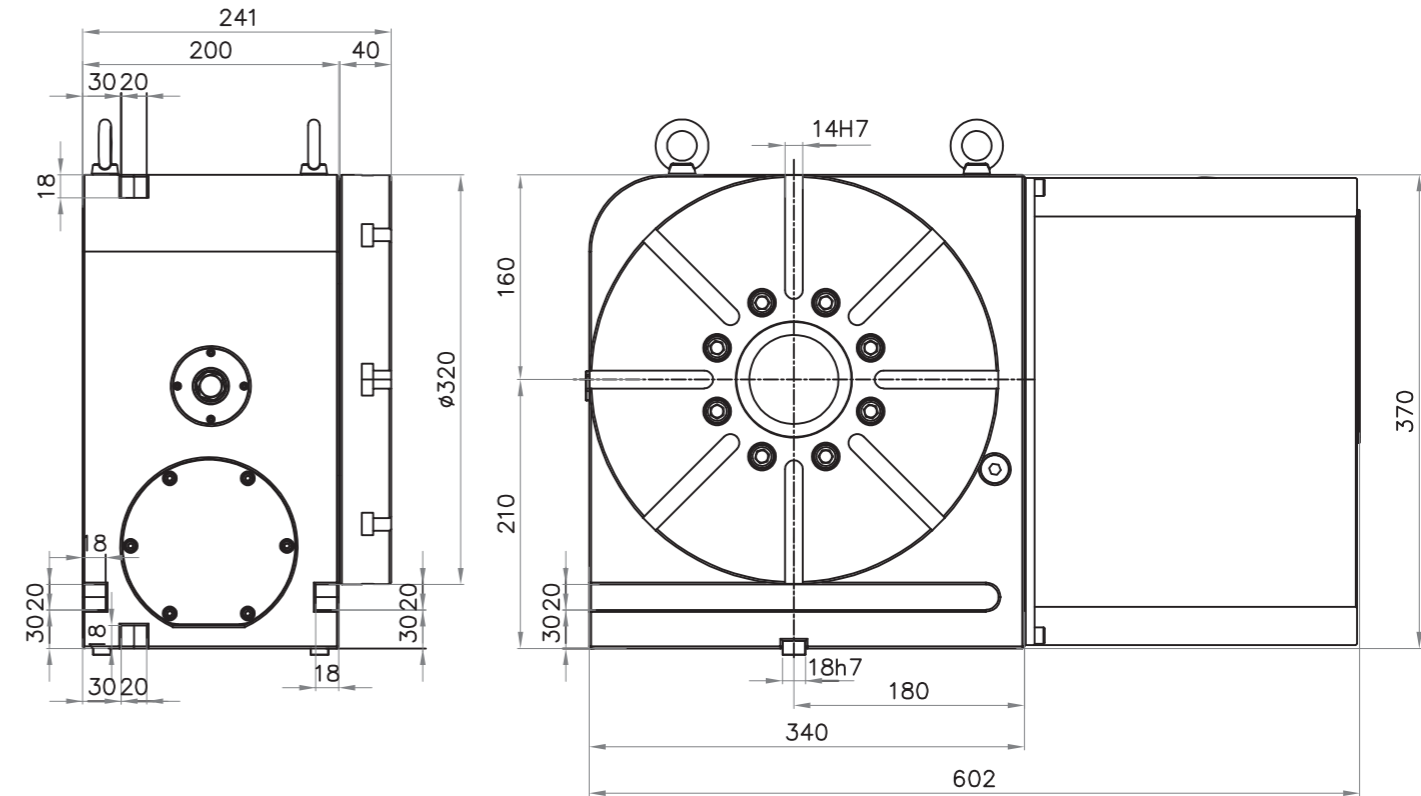
# GSD-NC200



# GSD-NC250



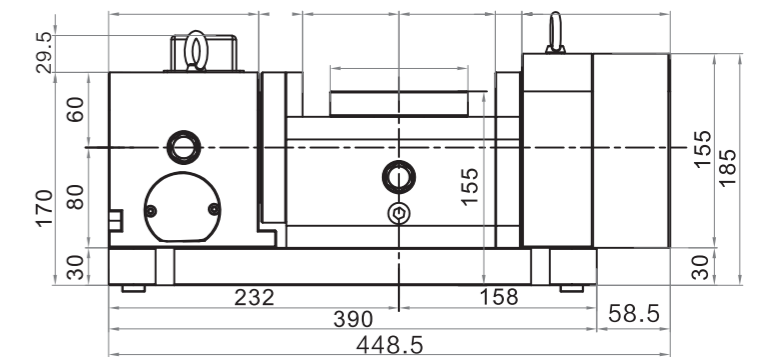
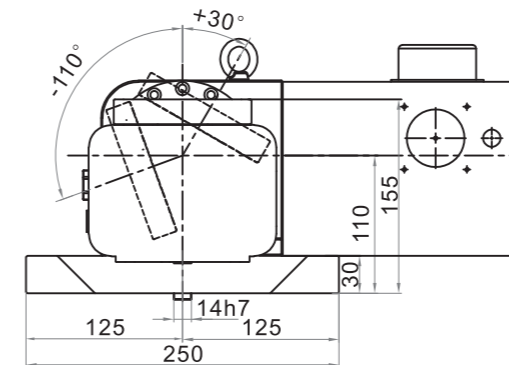
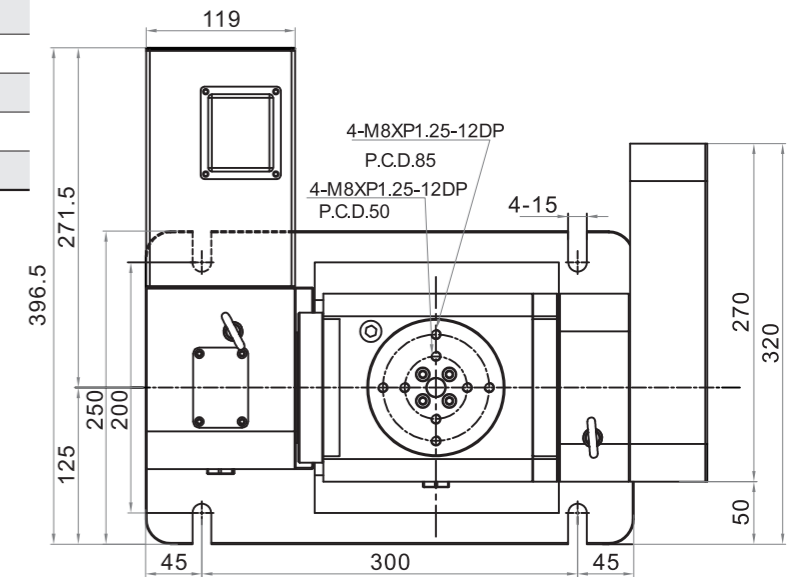
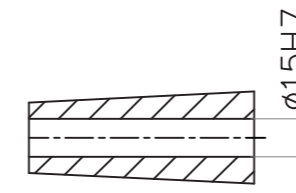
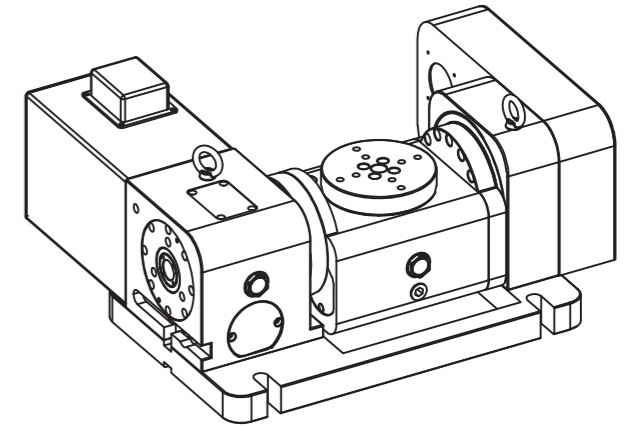
# GSD-NC320



# GSD-AC110

## 技术参数

项目	单位	数据	
工作盘尺寸	mm	Φ110	
盘面高	mm	155	
中心孔	mm	15H7	
基准定位键	mm	14H7	
容许切削力	N.m	90	
容许工件负载	mm	0° /12Kg	90° /8Kg
回转角度	mm	旋转轴, 360 倾斜轴, +30~-110	
伺服马达	FANUC	βiS1	βiS4
	MITSUBISHI	HF-KP43	HG-105S
总减速比		24	24
最高转速	r.p.m	100	100
最小分割角度	deg	0.001°	0.001°
分度精度	arc.cec	± 20	± 20
往复精度	arc.sec	± 8	± 8
制动方式		气压	气压
输入压力	kg-cm <sup>2</sup>	6	6
输出制锁扭力	N.m	80	110



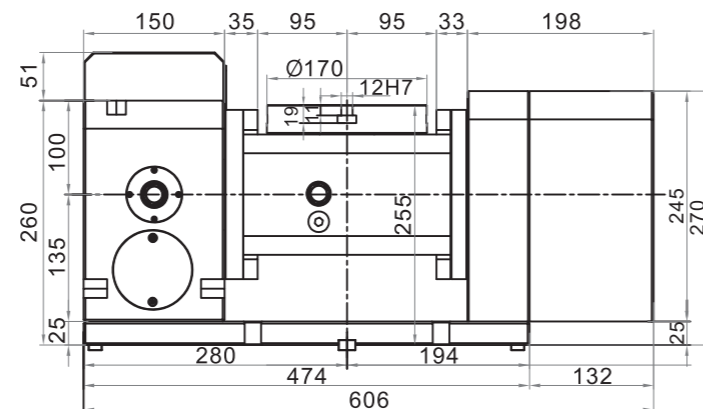
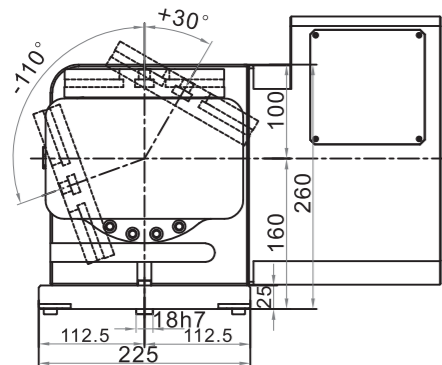
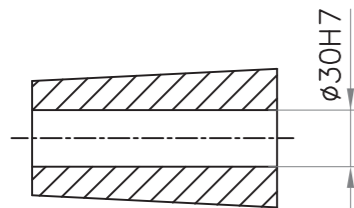
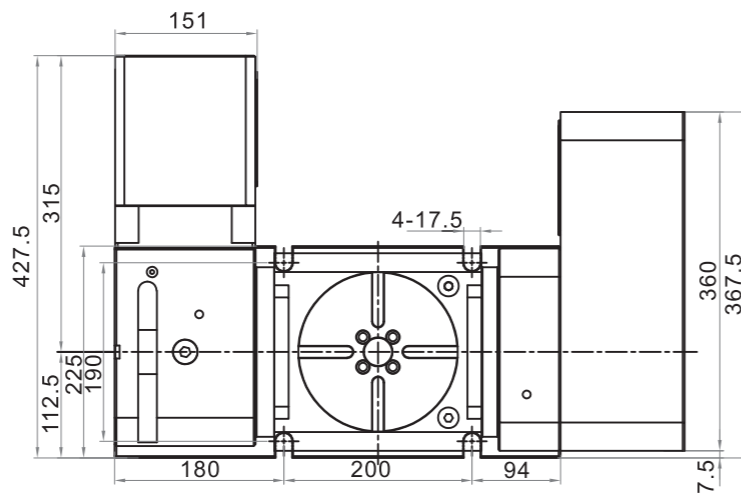
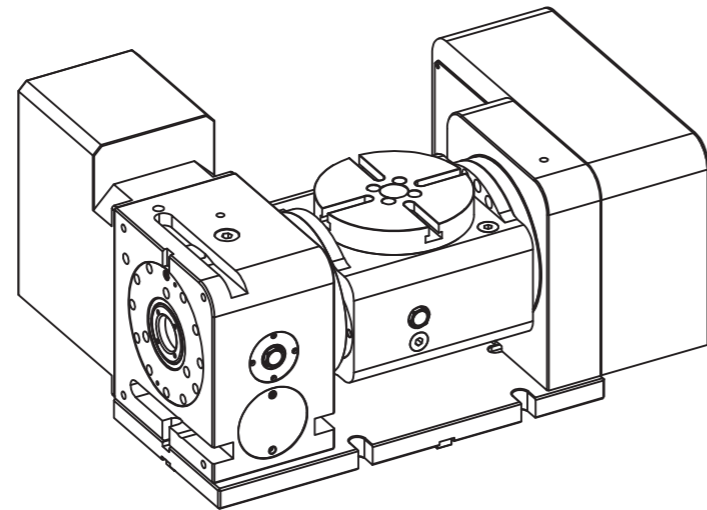
## AC系列

(GSD-AC110, GSD-AC170, GSD-AC170L, GSD-AC250)

# GSD-AC170

## 技术参数

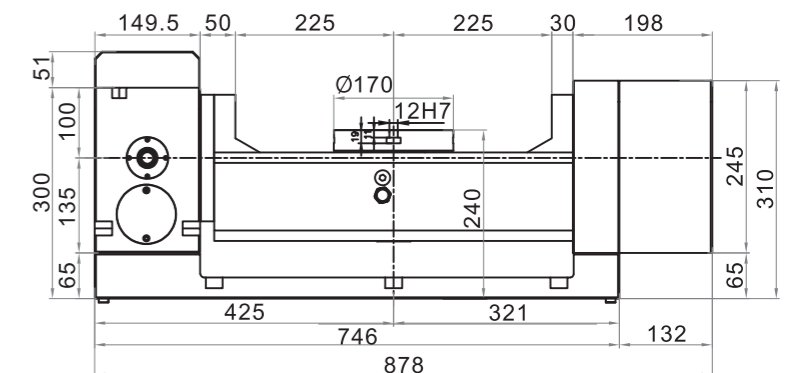
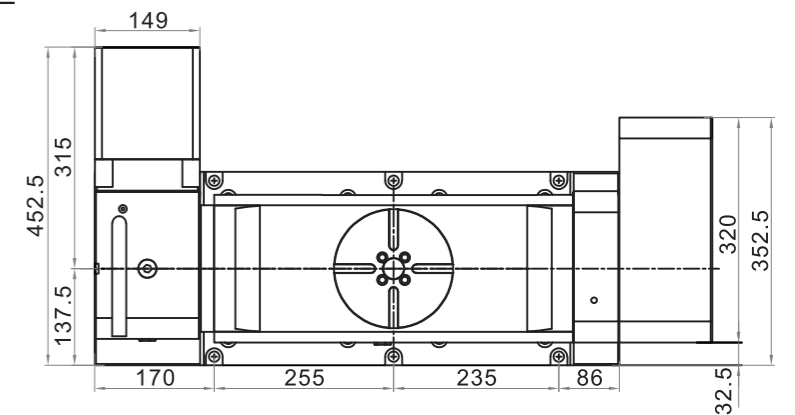
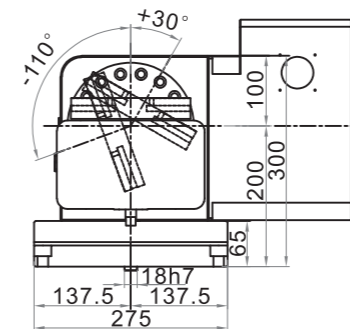
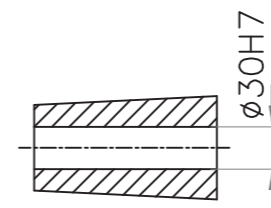
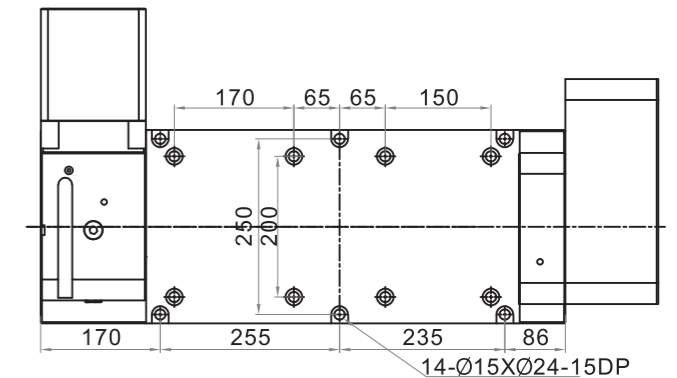
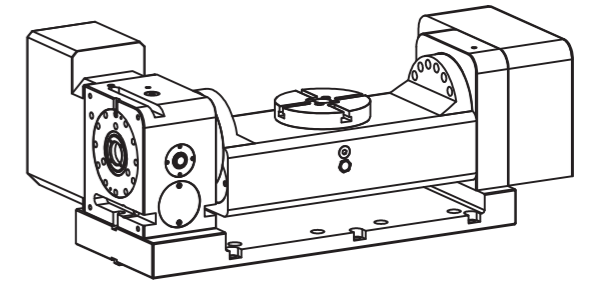
项目	单位	数据	
工作盘尺寸	mm	Φ170	
盘面高	mm	255	
中心孔	mm	30H7	
基准定位键	mm	18H7	
T型槽	mm	12H7	
容许切削力	N.m	120	
容许工件负载	mm	0° /30Kg	90° /20Kg
回转角度	mm	旋转轴, 360	倾斜轴, +30~-110
伺服马达	FANUC	βiS4	βiS8
	MITSUBISHI	HG-105S	HG-104S
总减速比		40	48
最高转速	r.p.m	70	60
最小分割角度	deg	0.001°	0.001°
分度精度	arc.cec	±20	±20
往复精度	arc.sec	±8	±8
制动方式		气压	气压
输入压力	kg-cm <sup>2</sup>	6	6
输出制锁扭力	N.m	100	220



# GSD-AC170L

## 技术参数

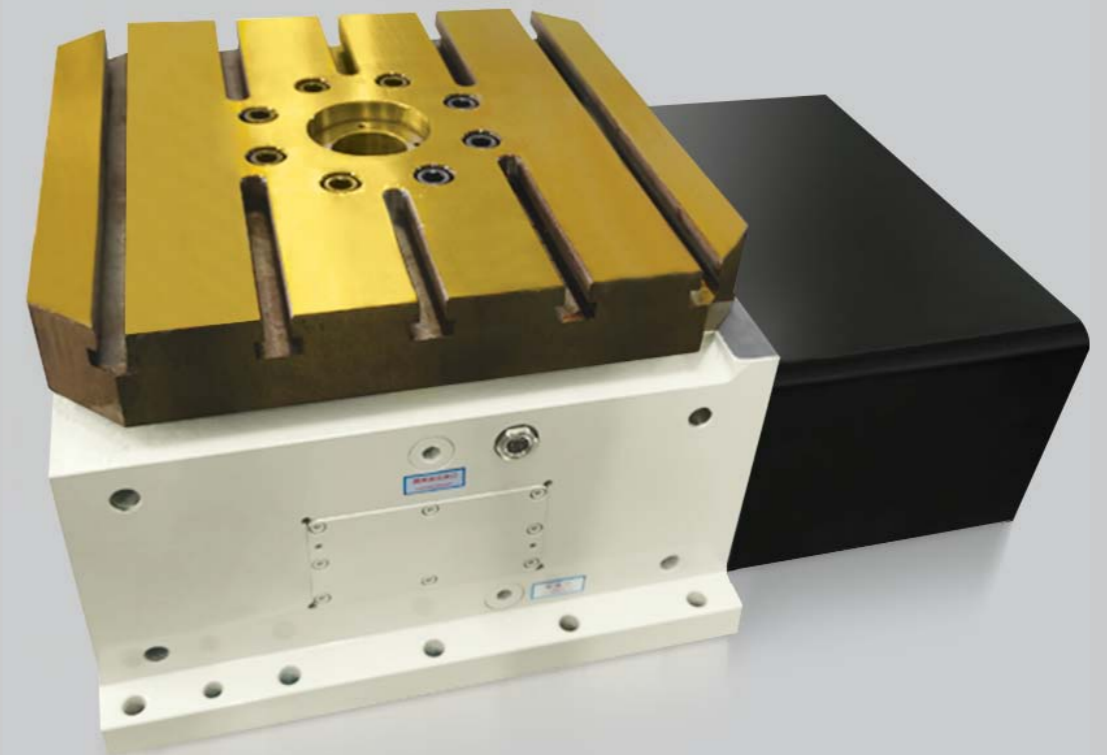
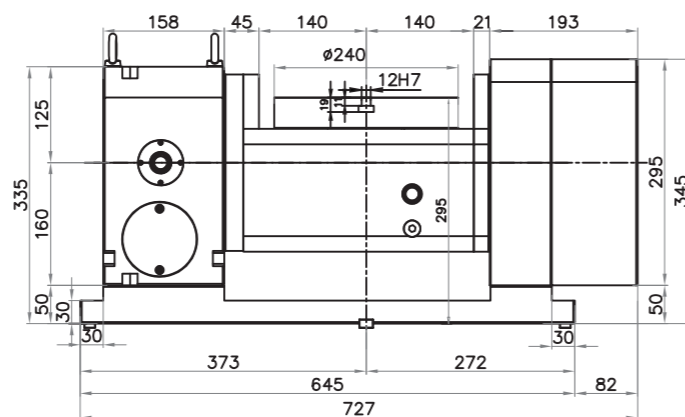
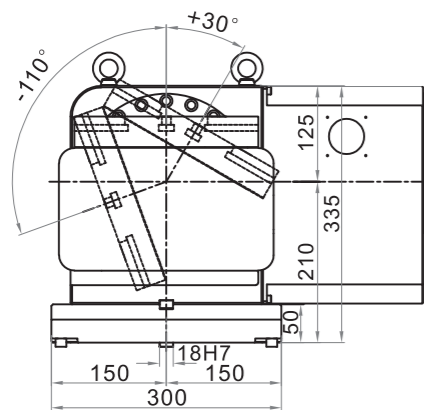
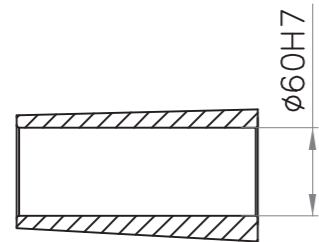
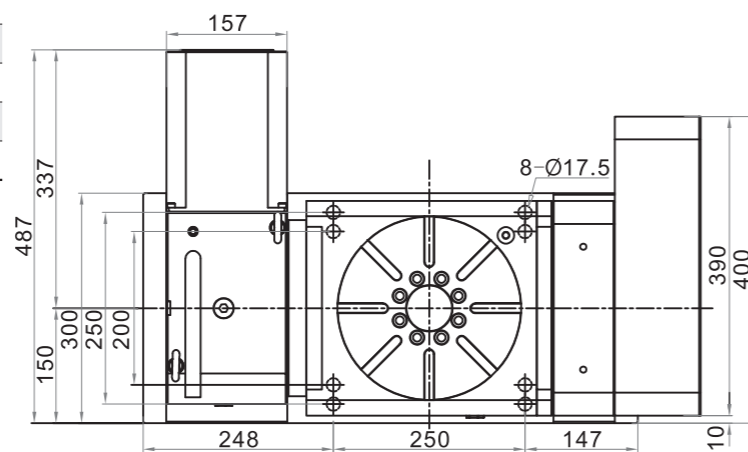
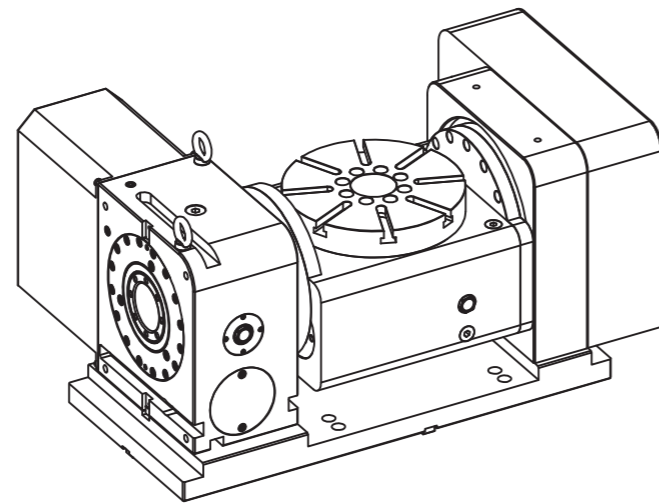
项目	单位	数据	
工作盘尺寸	mm	Φ170	
盘面高	mm	240	
中心孔	mm	30H7	
基准定位键	mm	18H7	
T型槽	mm	12H7	
容许切削力	N.m	120	
容许工件负载	mm	0° /30Kg	90° /20Kg
回转角度	mm	旋转轴, 360	倾斜轴, +30~-110
伺服马达	FANUC	βiS4	βiS8
	MITSUBISHI	HG-105S	HG-104S
总减速比		40	48
最高转速	r.p.m	70	60
最小分割角度	deg	0.001°	0.001°
分度精度	arc.cec	±20	±20
往复精度	arc.sec	±8	±8
制动方式		气压	气压
输入压力	kg-cm <sup>2</sup>	6	6
输出制锁扭力	N.m	100	220



# GSD-AC250

## 技术参数

项目	单位	数据	
工作盘尺寸	mm	Φ240	
盘面高	mm	295	
中心孔	mm	60H7	
基准定位键	mm	18H7	
T型槽	mm	12H7	
容许切削力	N.m	280	
容许工件负载	mm	0° /100Kg	90° /60Kg
回转角度	mm	旋转轴, 360	倾斜轴, +30~-110
伺服马达	FANUC	βiS8	βiS8
	MITSUBISHI	HG-104S	HG-104S
总减速比		40	48
最高转速	r.p.m	70	60
最小分割角度	deg	0.001°	0.001°
分度精度	arc.cec	± 20	± 20
往复精度	arc.sec	± 8	± 8
制动方式		油压	油压
输入压力	kg-cm <sup>2</sup>	20	20
输出制锁扭力	N.m	550	648

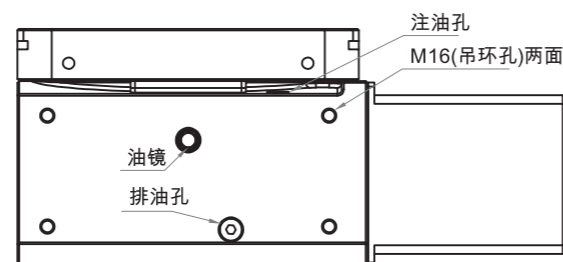
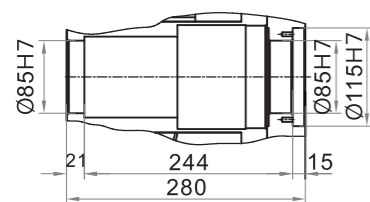
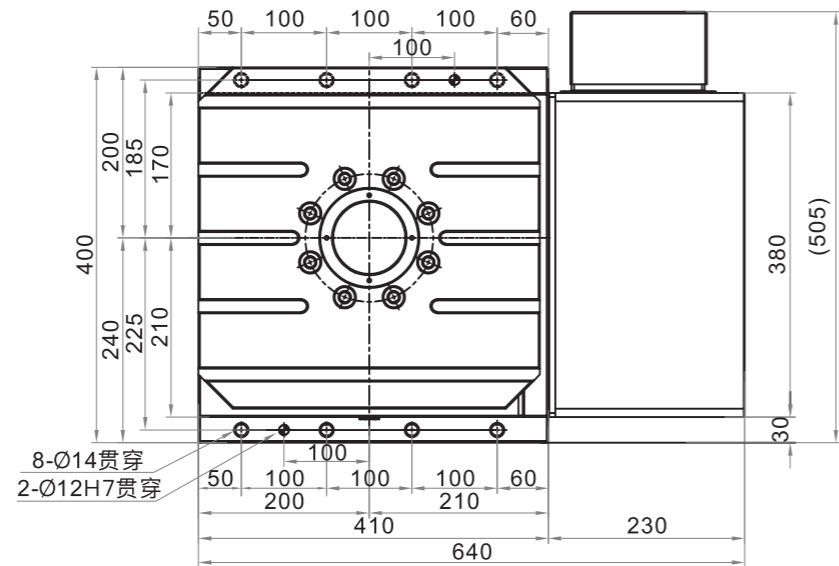
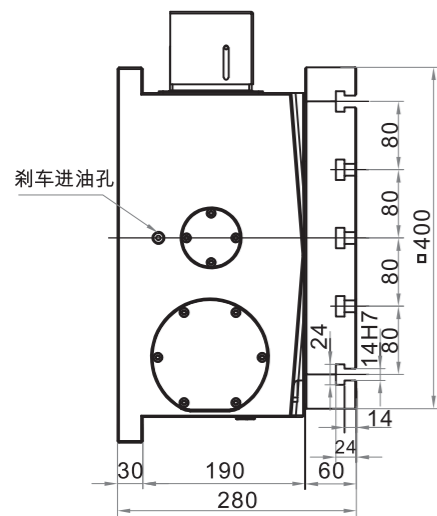
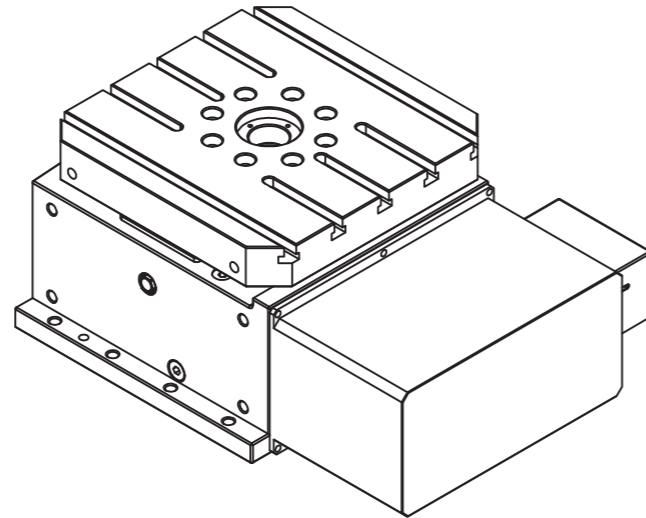


DC系列  
(GSD-DC400, GSD-DC500, GSD-DC630, GSD-DC800)

# GSD-DC400

## 技术参数

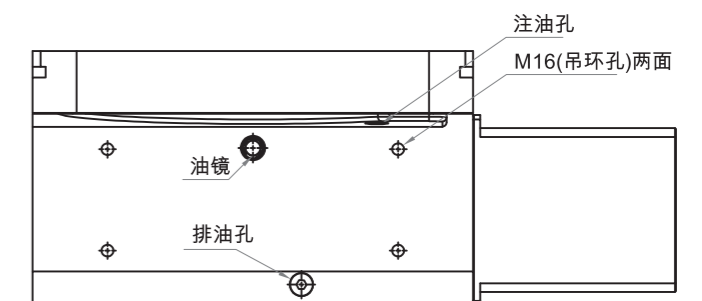
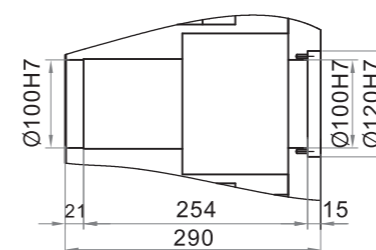
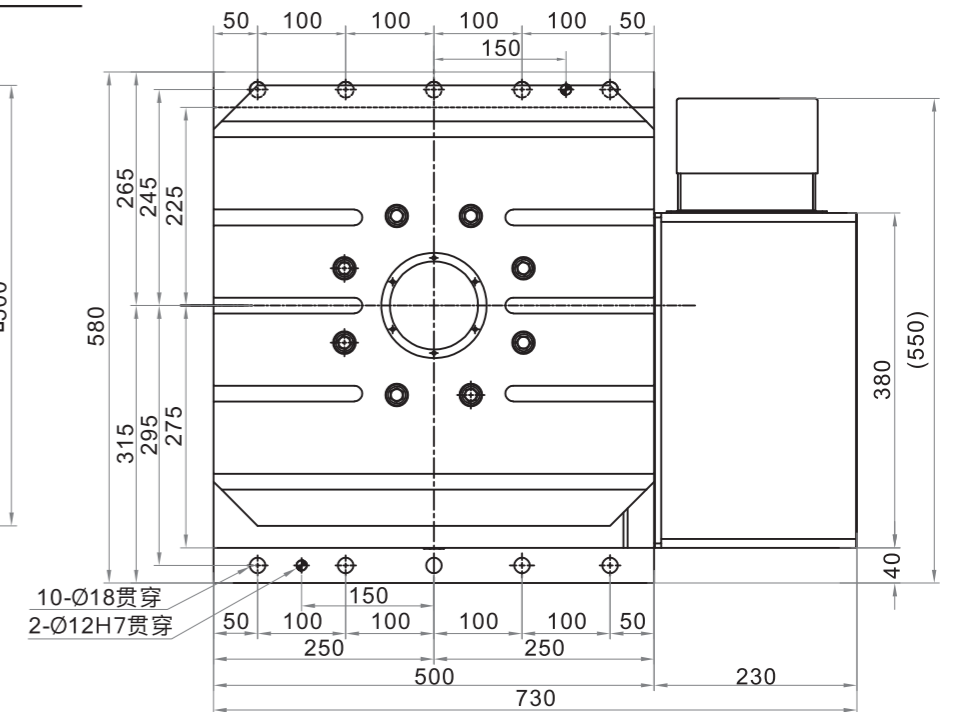
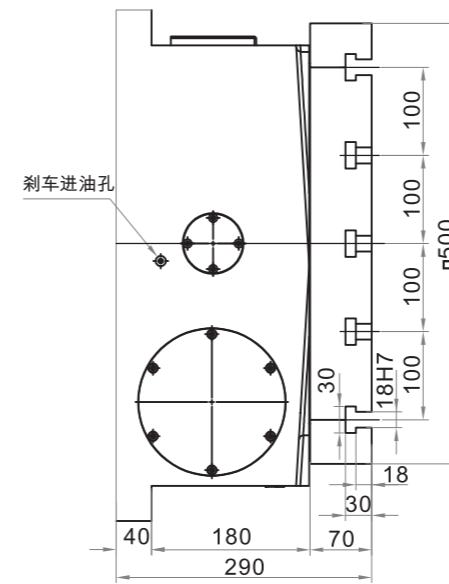
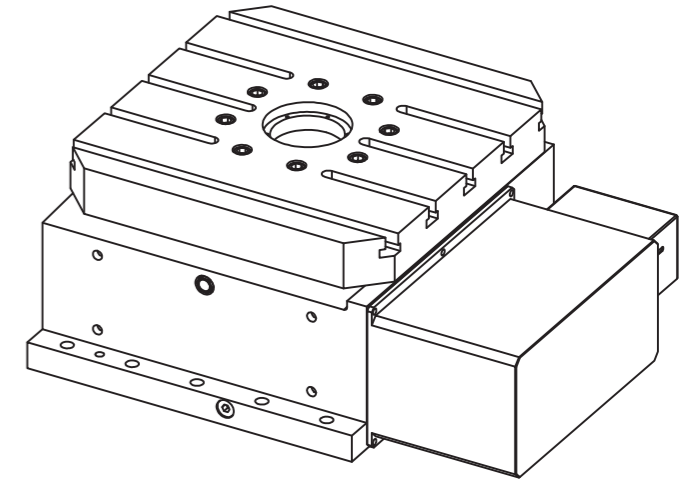
项目	单位	数据
工作盘尺寸	mm	□400
中心通孔	mm	Φ85
T型槽	mm	14H7
伺服马达	FANUC	βiS22
	mitsubishi	HG-204S
总减速比		60
最高转速	r.p.m	50
最小分割角度	deg	0.001°
分度精度	arc.cec	± 20
往复精度	arc.sec	± 8
制动方式		油压
输入压力	kg-cm <sup>2</sup>	30
输出制锁扭力	N.m	1960
容许切削力	N.m	1750



# GSD-DC500

## 技术参数

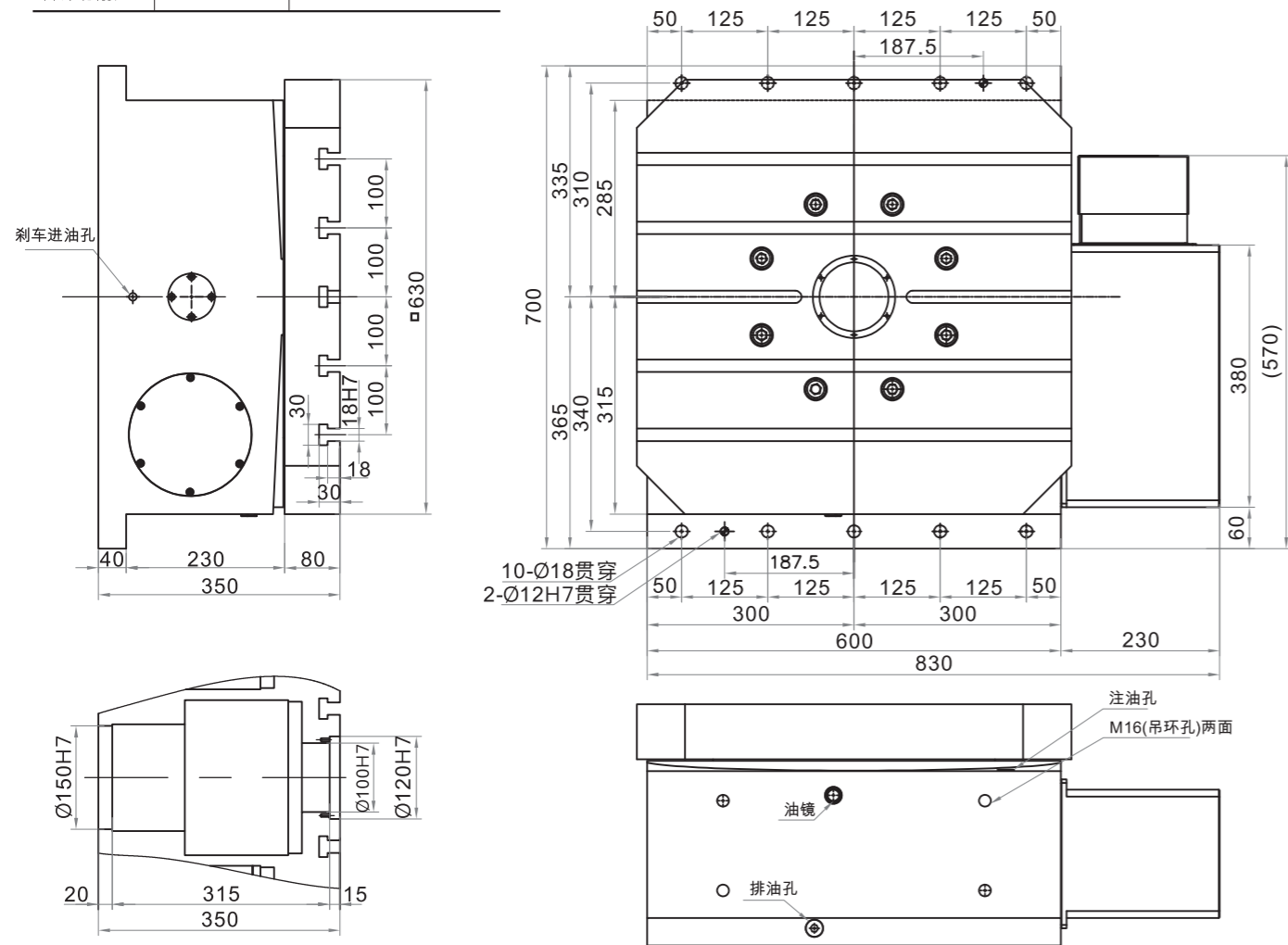
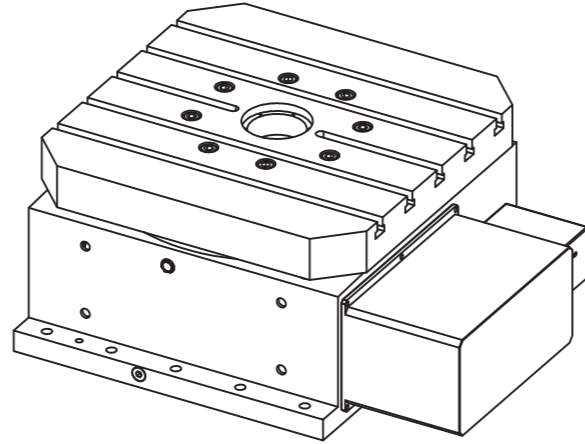
项目	单位	数据
工作盘尺寸	mm	□500
中心通孔	mm	Φ100
T型槽	mm	18H7
伺服马达	FANUC	βiS22
	mitsubishi	HG-204S
总减速比		60
最高转速	r.p.m	50
最小分割角度	deg	0.001°
分度精度	arc.cec	± 20
往复精度	arc.sec	± 8
制动方式		油压
输入压力	kg-cm <sup>2</sup>	30
输出制锁扭力	N.m	2660
容许切削力	N.m	2250



# GSD-DC630

## 技术参数

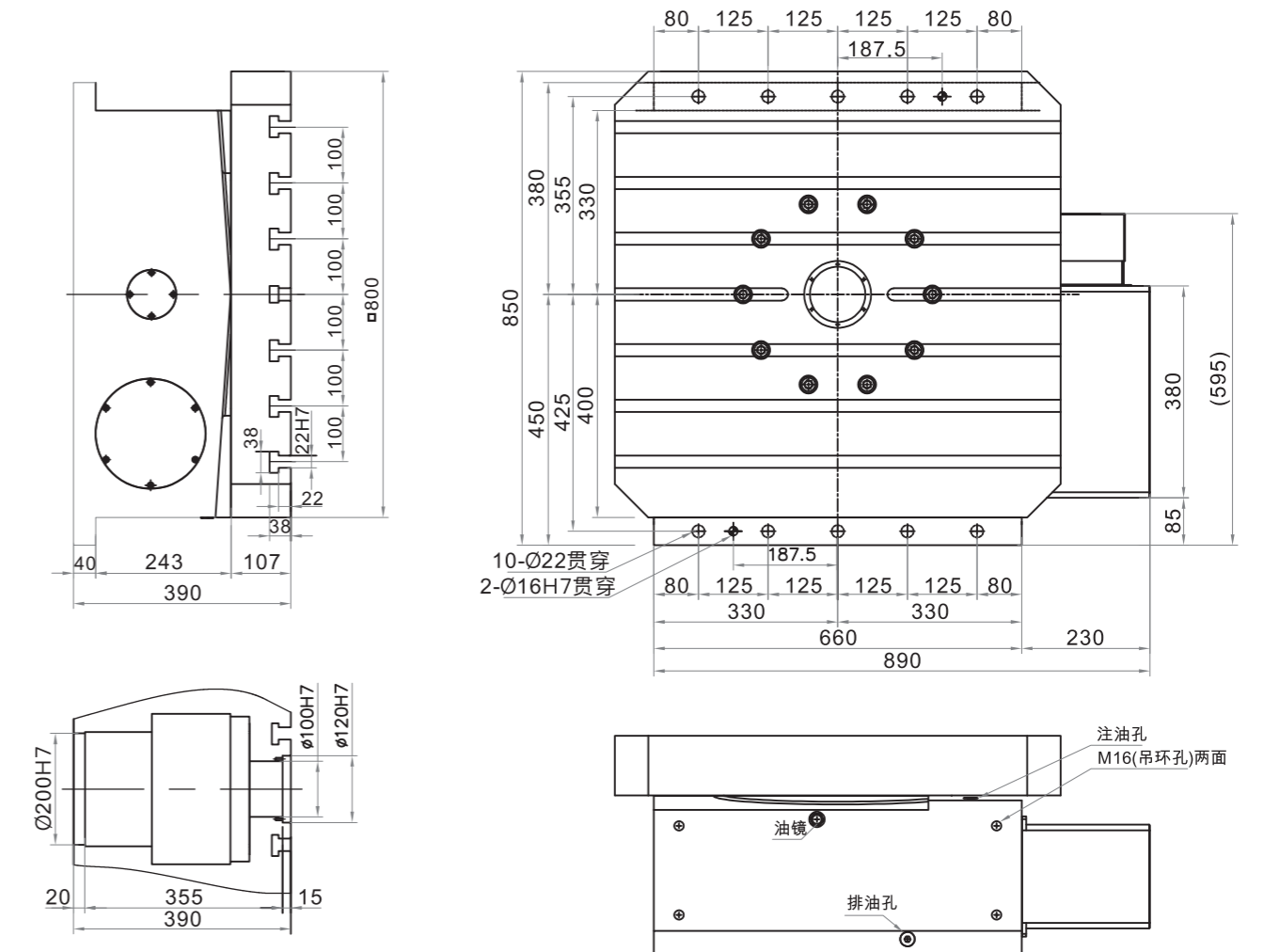
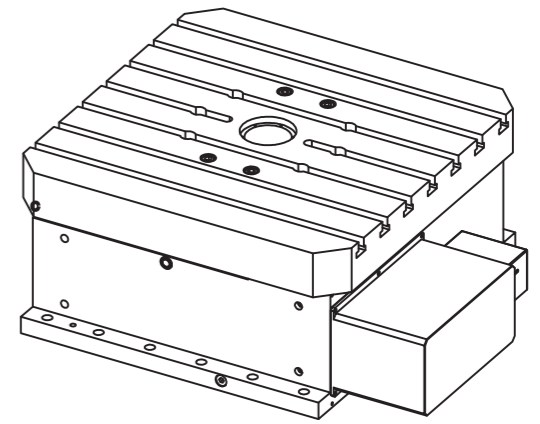
项目	单位	数据
工作盘尺寸	mm	□630
中心通孔	mm	Φ100
T型槽	mm	18H7
伺服马达	FANUC	βiS22
	mitsubishi	HG-204S
总减速比		72
最高转速	r.p.m	25
最小分割角度	deg	0.001°
分度精度	arc.cec	±20
往复精度	arc.sec	±8
制动方式		油压
输入压力	kg-cm <sup>2</sup>	30
输出制锁扭力	N.m	4800
容许切削力	N.m	4750



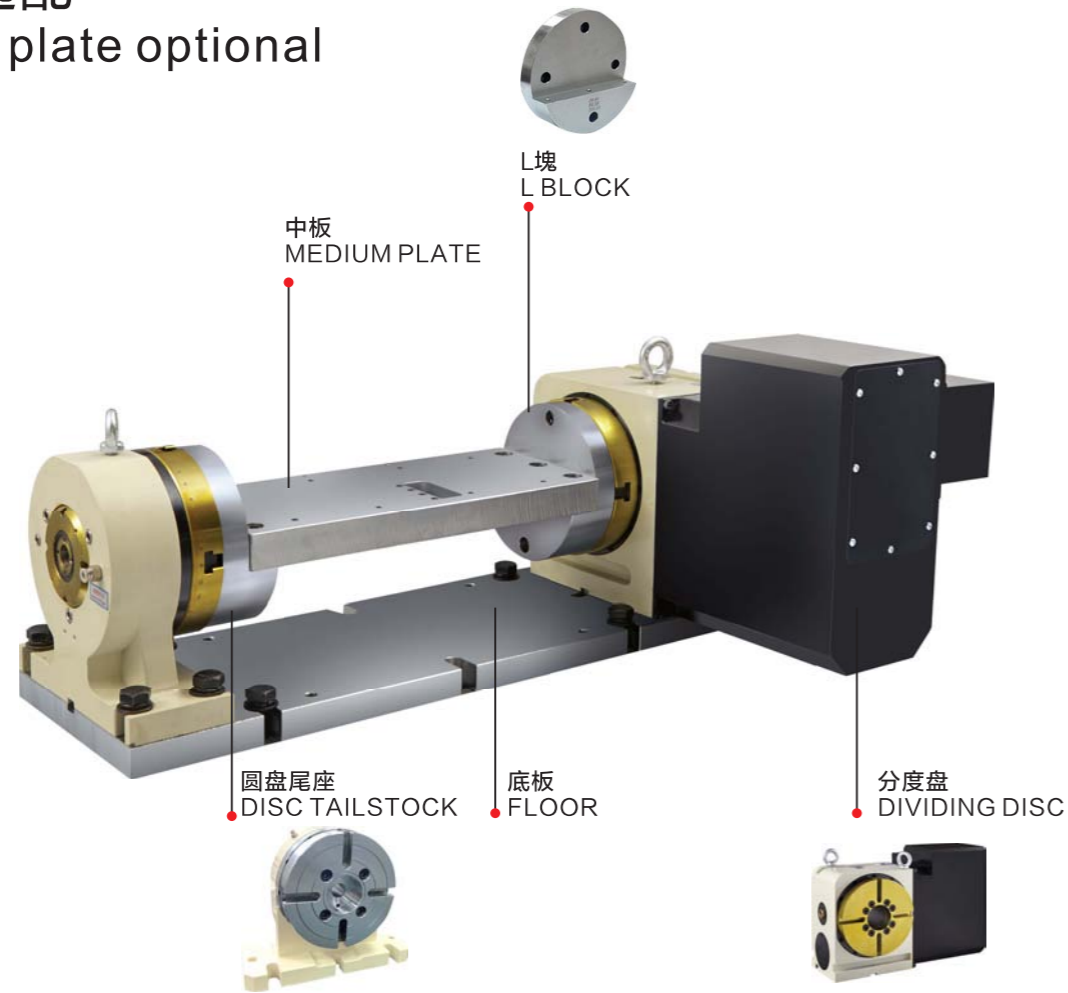
# GSD-DC800

## 技术参数

项目	单位	数据
工作盘尺寸	mm	□800
中心通孔	mm	Φ100
T型槽	mm	22H7
伺服马达	FANUC	βiS22
	mitsubishi	HG-204S
总减速比		96
最高转速	r.p.m	20
最小分割角度	deg	0.001°
分度精度	arc.cec	±20
往复精度	arc.sec	±8
制动方式		油压
输入压力	kg-cm <sup>2</sup>	30
输出制锁扭力	N.m	8500
容许切削力	N.m	7500



## 分度盘选配 Indexing plate optional



## 周边配件 Peripheral Accessories



## 转台规格选择表 Check sheet for rotary table specifications

机台规格 Rotary Tables	机床规格 Machine specifications	品牌 Brand _____ 型号 Model number _____
	机床控制器 Machine Tool Controller	<input type="checkbox"/> 发那科 FANUC <input type="checkbox"/> 三菱 Mitsubishi <input type="checkbox"/> 西门子 Siemens <input type="checkbox"/> 新代 New Generation <input type="checkbox"/> 安川 Yaskawa <input type="checkbox"/> 其他 Others
机床工作台 Machine tool table	配线 Wiring	<input type="checkbox"/> 需要 Need <input type="checkbox"/> 仅需要动力内线 Only need power inside <input type="checkbox"/> 仅需要动力内线/信号内线 Need power extension/signal extension
	T槽宽(A) T slot width (A)	<input type="checkbox"/> 14mm <input type="checkbox"/> 16mm <input type="checkbox"/> 18mm <input type="checkbox"/> 22mm <input type="checkbox"/> 其他 Other
	T槽间距尺寸(B) T slot spacing size (B)	<input type="checkbox"/> 100mm <input type="checkbox"/> 125mm <input type="checkbox"/> 150mm <input type="checkbox"/> 其他 Other
数控转台 CNC turntable	工作台T槽数 Number of T Slots of Workbench	<input type="checkbox"/> 3 <input type="checkbox"/> 4 <input type="checkbox"/> 5 <input type="checkbox"/> 6 <input type="checkbox"/> 其他 Other
	刹车夹紧方式 Brake clamping method	<input type="checkbox"/> 气刹 Air brake <input type="checkbox"/> 油刹 (请选用其他配件) Oil brake (please choose other accessories)
电机规格 Motor specifications	发那科 FANUC	<input type="checkbox"/> 型号 Model: _____ <input type="checkbox"/> 直轴 Straight shaft <input type="checkbox"/> 锥轴 Taper shaft
	三菱 Mitsubishi	<input type="checkbox"/> 型号 Model: _____ <input type="checkbox"/> 直轴 Straight shaft <input type="checkbox"/> 锥轴 Taper shaft
	西门子 Siemens	<input type="checkbox"/> 型号 Model: _____
	新代 New generation	<input type="checkbox"/> 型号 Model: _____
	安川 Yaskawa	<input type="checkbox"/> 型号 Model: _____
	其他 other	<input type="checkbox"/> 型号 Model: _____ (请提供电机外形尺寸图及资料) (please provide motor dimensions and information)
尾座 (特别附件) Tailstock (special accessory)	可换式手动顶尖尾座 Interchangeable hands Moving top tailstock	GSD80/135/160/210/其他
	圆盘刹车尾座 Disc brake tailstock	GSD80/135/160/210/其他
	其他 Other	_____



应用案例  
Applications

